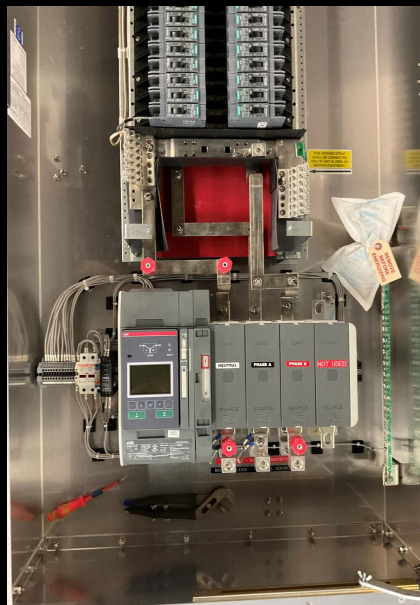


AUTOMATIC TRANSFER SWITCH - PRO SERIES B ATS & MTS

APEX Infrastructure is committed to delivering proven, safe, reliable, and flexible next generation equipment for the emerging Hyperscale and AI data center environment while meeting today's current operational requirements.

FEATURES & BENEFITS

- True all-in-one Breaker Based ATS & MTS
- Service Entrance Rated/Breaker Style with lugs
- Integrated Smart Programmer & Comms port
- 2, 3 & 4 Pole ATS 100A – 5000A
- UL Listed Switch & Controller in one unit
- Ensures steady delivery of critical power
- Custom configurable to meet your requirements
- Self contained design reduces install time by 80%
- Adaptability: Auto voltage & frequency sensing
- UL 1008 & 891 File Listing, Assembled in USA & TAA
- Automatic and Manual transfer modes



SERVICE ENTRANCE RATED ATS & MTS SPECIFICATIONS

ELECTRICAL

Input/Output	1-3 Phase 2 - 5 Wire + Ground (50 or 60 Hz)
Input/Output	208/120, 415/230, 480/277 & 600 Volt, (LV)
Input Amperage	100 to 5000 Amp Configurations
Neutral Rating	100% Single Point Ground
Number of Pole	2, 3, 4, Switched Neutral, By-pass Isolation
Source Breaker	Up to 2, Indoor/Outdoor & Service Entrance Rated
KAIC Rating	Standard is 65KA (Higher KA Available)

SITE CONDITIONS

Operating Temp	0° to 40° C, Convection Cooled
Storage Temp	-40° to -60° C
Relative Humidity	10% - 95% non-condensing

GENERAL

- Hinged Dead Front Panel
- Built in Smart HMI
- Top and Bottom Access
- Breaker Based & Open Transition
- SPD/TVSS Protection
- Wall Mount/Floor Standing

OPEN COMMUNICATIONS

- Modbus RTU (RS-485)
- Modbus TCP
- Webserver

STANDARDS

- UL 1008 & 891 Listed
- NEMA 1 & CETL Listed
- CSA C22.2#14 NFPA 70-99-101

CONTACT: John Younts

P: 202-374-0088

john@apex-infra.ai

DIMENSIONS (2, 3 & 4 Pole) H x W x D

100A	20" x 16" x 12"	70 lbs
200A	20" x 16" x 12"	75 lbs
260A	48" x 24" x 12"	160 lbs
400A	48" x 24" x 12"	165 lbs
600A	48" x 36" x 20"	215 lbs
800A	60" x 36" x 20"	260 lbs
1200A	60" x 36" x 20"	270 lbs

*1600-5000A Call for Dimensions

OPTIONS

- Power Quality Metering
- Floor Stands / Leg Kit / Lockable
- SNMP, Modbus, TCP-IP Comms
- Custom Sizes Available
- NEMA 1, 4/12, 3R, and 4X
- Local 6.5" Color Touchscreen
- Main Feed Circuit Monitoring
- Integrated Panelboard and Heater
- Plug-in or Bolt-in Circuit Breakers
- Manual Bypass Isolation
- I/R Port and Isolated Ground
- 100 to 200KA Withstand Rating with Fuse

